

1
WAY

BRIGHT ZINC PLATED ■ KINMAR® PERMANENT

BOX QTY 50



TECHNICAL SIZE	PART CODE	DRILL HOLE DIAMETER (mm)	MAXIMUM FIXTURE THICK- NESS (mm)	MINIMUM HOLE DEPTH* (mm)	RECOMMENDED TIGHTENING TORQUE (nm)	SAFE STATIC LOADS FOR 5.8 THREADED STUD (kn)		DRIVER SIZE
						TENSION	SHEAR	
M6 x 45mm	KMPSA0845	8	6	37	7	1.1	2.0	KM06P
M8 x 50mm	KMPSA0850	10	6	45	15	1.9	6.5	KM08P
M8 x 60mm	KMPSA0860	10	16	45	15	1.9	6.5	KM08P
M8 x 70mm	KMPSA0870	10	25	45	15	1.9	6.5	KM08P
M8 x 90mm	KMPSA0890	10	45	45	15	1.9	6.5	KM08P
M10 x 60mm	KMPSA1060	12	8	52	31	3.0	8.5	KM10P
M10 x 70mm	KMPSA1070	12	18	52	31	3.0	8.5	KM10P
M10 x 80mm	KMPSA1080	12	25	52	31	3.0	8.5	KM10P
M10 x 95mm	KMPSA1095	12	45	52	31	3.0	8.5	KM10P

2
WAY

BRIGHT ZINC PLATED ■ KINMAR® REMOVABLE

BOX QTY 50



TECHNICAL SIZE	PART CODE	DRILL HOLE DIAMETER (mm)	MAXIMUM FIXTURE THICK- NESS (mm)	MINIMUM HOLE DEPTH* (mm)	RECOMMENDED TIGHTENING TORQUE (nm)	SAFE STATIC LOADS FOR 5.8 THREADED STUD (kn)		DRIVER SIZE
						TENSION	SHEAR	
M6 x 45mm	KMPSA0845	8	6	37	7	1.1	2.0	KM06R
M8 x 50mm	KMPSA0850	10	6	45	15	1.9	6.5	KM08R
M8 x 60mm	KMPSA0860	10	16	45	15	1.9	6.5	KM08R
M8 x 70mm	KMPSA0870	10	25	45	15	1.9	6.5	KM08R
M8 x 90mm	KMPSA0890	10	45	45	15	1.9	6.5	KM08R
M10 x 60mm	KMPSA1060	12	8	52	31	3.0	8.5	KM10R
M10 x 70mm	KMPSA1070	12	18	52	31	3.0	8.5	KM10R
M10 x 80mm	KMPSA1080	12	25	52	31	3.0	8.5	KM10R
M10 x 95mm	KMPSA1095	12	45	52	31	3.0	8.5	KM10R

=> Outil de pose Kinmar©



2
WAY

COUNTERSUNK ■ A2 STAINLESS STEEL ■ 6-LOBE PIN

BOX QTY 50



TECHNICAL SIZE	PART CODE	DRILL HOLE DIAMETER (mm)	MAXIMUM FIXTURE THICKNESS (mm)	MINIMUM HOLE DEPTH* (mm)	RECOMMENDED TIGHTENING TORQUE (nm)	SAFE STATIC LOADS (kn)		DRIVER SIZE
						TENSION	SHEAR	
M6 x 50mm	RTCSA0850	8	10	37	7	1.2	2.3	T30
M8 x 55mm	RTCSA0855	10	10	45	15	2.2	7.5	T40
M8 x 80mm	RTCSA0880	10	25	45	15	2.2	7.5	T40
M10 x 60mm	RTCSA1060	12	10	52	31	3.5	9.6	T45
M10 x 80mm	RTCSA1080	12	25	52	31	3.5	9.6	T45

2
WAY

BUTTON HEAD ■ A2 STAINLESS STEEL ■ 6-LOBE PIN

BOX QTY 50



TECHNICAL SIZE	PART CODE	DRILL HOLE DIAMETER (mm)	MAXIMUM FIXTURE THICKNESS (mm)	MINIMUM HOLE DEPTH* (mm)	RECOMMENDED TIGHTENING TORQUE (nm)	SAFE STATIC LOADS (kn)		DRIVER SIZE
						TENSION	SHEAR	
M6 x 45mm	RTBSA0845	8	10	37	7	1.2	2.3	T30
M8 x 55mm	RTBSA0855	10	10	45	15	2.2	7.5	T40
M8 x 75mm	RTBSA0875	10	25	45	15	2.2	7.5	T40
M10 x 65mm	RTBSA1065	12	10	52	31	3.5	9.6	T45
M10 x 80mm	RTBSA1080	12	25	52	31	3.5	9.6	T45

=> Outil de pose Resitorx©



2
WAY

BUTTON HEAD ■ BRIGHT ZINC PLATED ■ PIN HEX

BOX QTY 50



TECHNICAL SIZE	PART CODE	DRILL HOLE DIAMETER (mm)	MAXIMUM FIXTURE THICK- NESS* (mm)	MINIMUM HOLE DEPTH** (mm)	RECOMMENDED TIGHTENING TORQUE (nm)	SAFE STATIC LOADS (kn)		DRIVER SIZE
						TENSION	SHEAR	
M8 x 65mm	SHAPH0885	14	25	50	15	4.8	4.4	H50
M10 x 75mm	SHAPH1075	16	25	60	27	6.2	6.1	H60

* Max without washer

** Minimum hole depth quoted is for maximum fixture thickness. For thinner fixtures increase the hole depth accordingly

1
WAY

BUTTON HEAD ■ BRIGHT ZINC PLATED ■ DRILL OUT

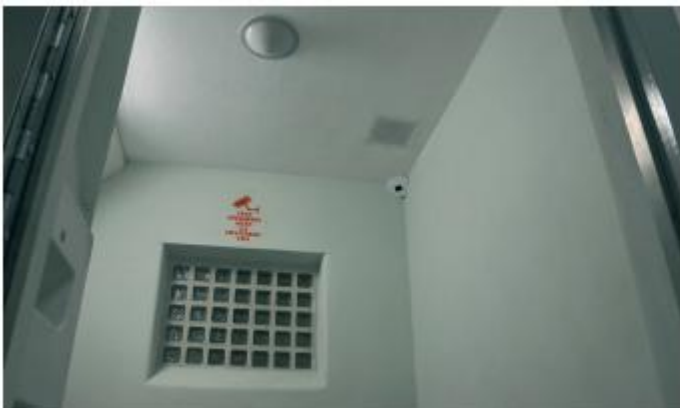
BOX QTY 50



TECHNICAL SIZE	PART CODE	DRILL HOLE DIAM- ETER (mm)	MAXIMUM FIXTURE THICK- NESS* (mm)	MINIMUM HOLE DEPTH** (mm)	RECOM- MENDED TIGHTENING TORQUE (nm)	SAFE STATIC LOADS (kn)		DRIVER SIZE	HSS DRILL OUT SIZE MM
						TENSION	SHEAR		
M8 x 65mm	SHADO0885	14	25	50	15	4.8	4.4	STD 5mm HEX BIT	6.5
M10 x 75mm	SHADO1075	16	25	60	27	6.2	6.1	STD 6mm HEX BIT	7.5

* Max without washer

=> Outil de pose Pin Hex©



HOW TO INSTALL SHIELD ANCHORS (BOTH TYPES)

A. Pre-drill base material



B. Insert Anchor shield



C. Position fixture, tighten bolt into shield



D. Secure removable fixing



EXTRA INSTALL STEPS FOR DRILLOUT VERSION ONLY

E. Drill out Hex socket using standard HSS drill



F. Secure permanent fixing

